

 CENTER LINE INTERSTATE 73

 EDGE OF PAVEMENT

 PROPOSED RIGHT-OF-WAY

 EXISTING RIGHT-OF-WAY

 PROPERTY LINE

 LANE LINE

 APPROXIMATE LIMIT OF CONSTRUCTION

 COUNTY LINE

 PAVEMENT TO BE REMOVED

 PROPOSED BRIDGE

2915

TRACT NUMBER

 WETLAND DELINEATION

 WETLANDS CONTINUE BEYOND DELINEATION

 RIGHT OF WAY EASEMENT LINE (N.C. ONLY)



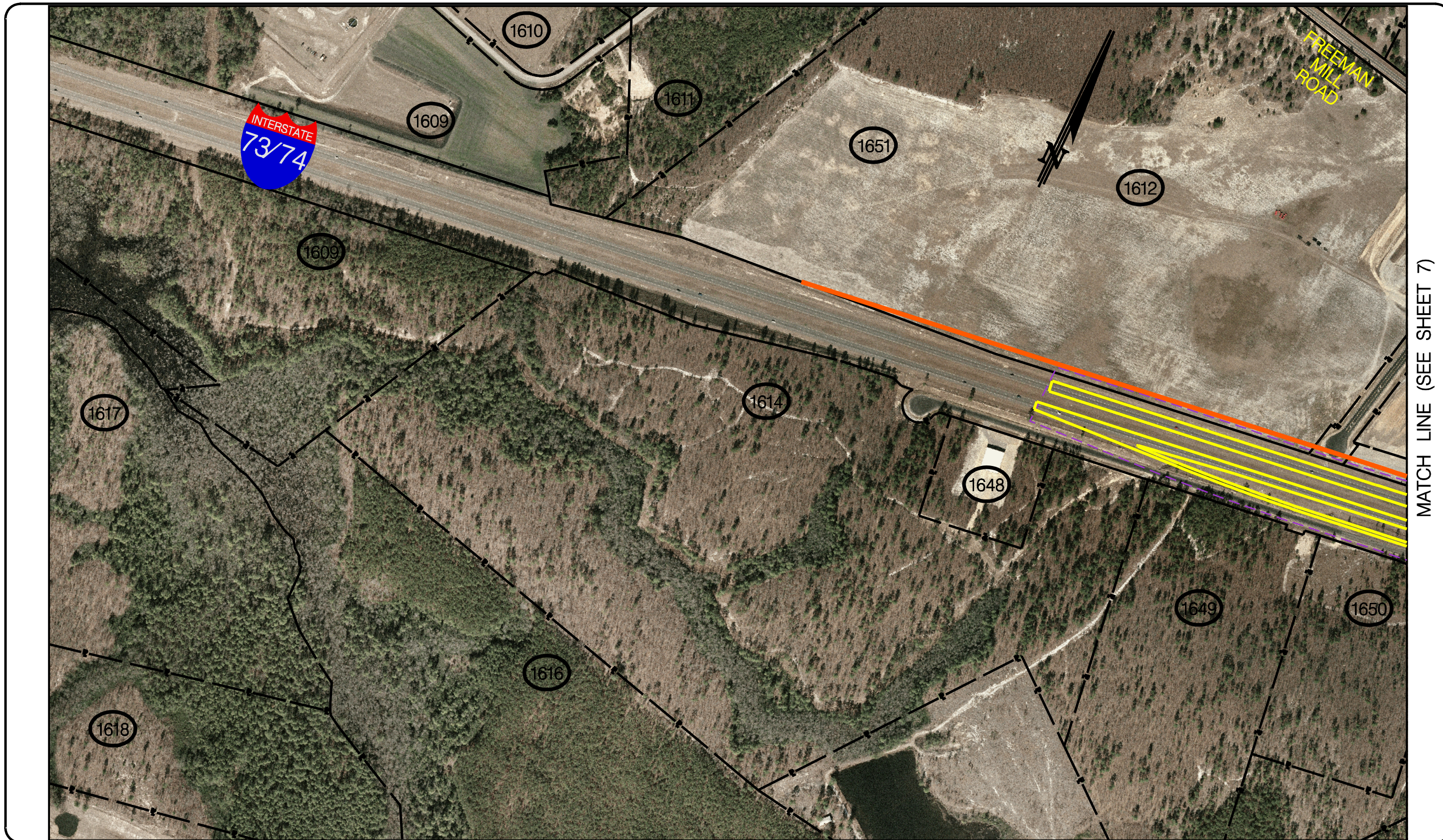
INTERSTATE 73
MARLBORO & DILLON COUNTIES
SOUTH CAROLINA
RICHMOND & SCOTLAND COUNTIES
NORTH CAROLINA

CONCEPTUAL ROADWAY PLANS
I-73 NORTH (I-74 TO I-95)

NOT TO SCALE

PREFERRED ALTERNATIVE
LEGEND

SHEET
5A

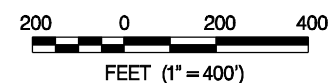


PHOTOGRAPHY DATE: 2005



INTERSTATE 73
 MARLBORO & DILLON COUNTIES
 SOUTH CAROLINA
 RICHMOND & SCOTLAND COUNTIES
 NORTH CAROLINA

CONCEPTUAL ROADWAY PLANS
 I-73 NORTH (I-74 TO I-95)



PREFERRED ALTERNATIVE

SHEET
 6