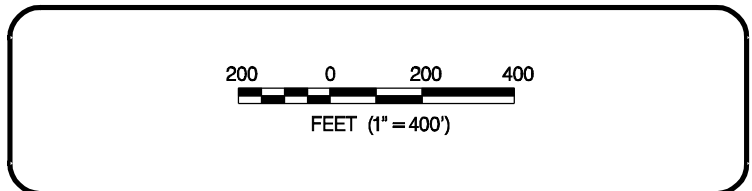


PHOTOGRAPHY DATE: 2003



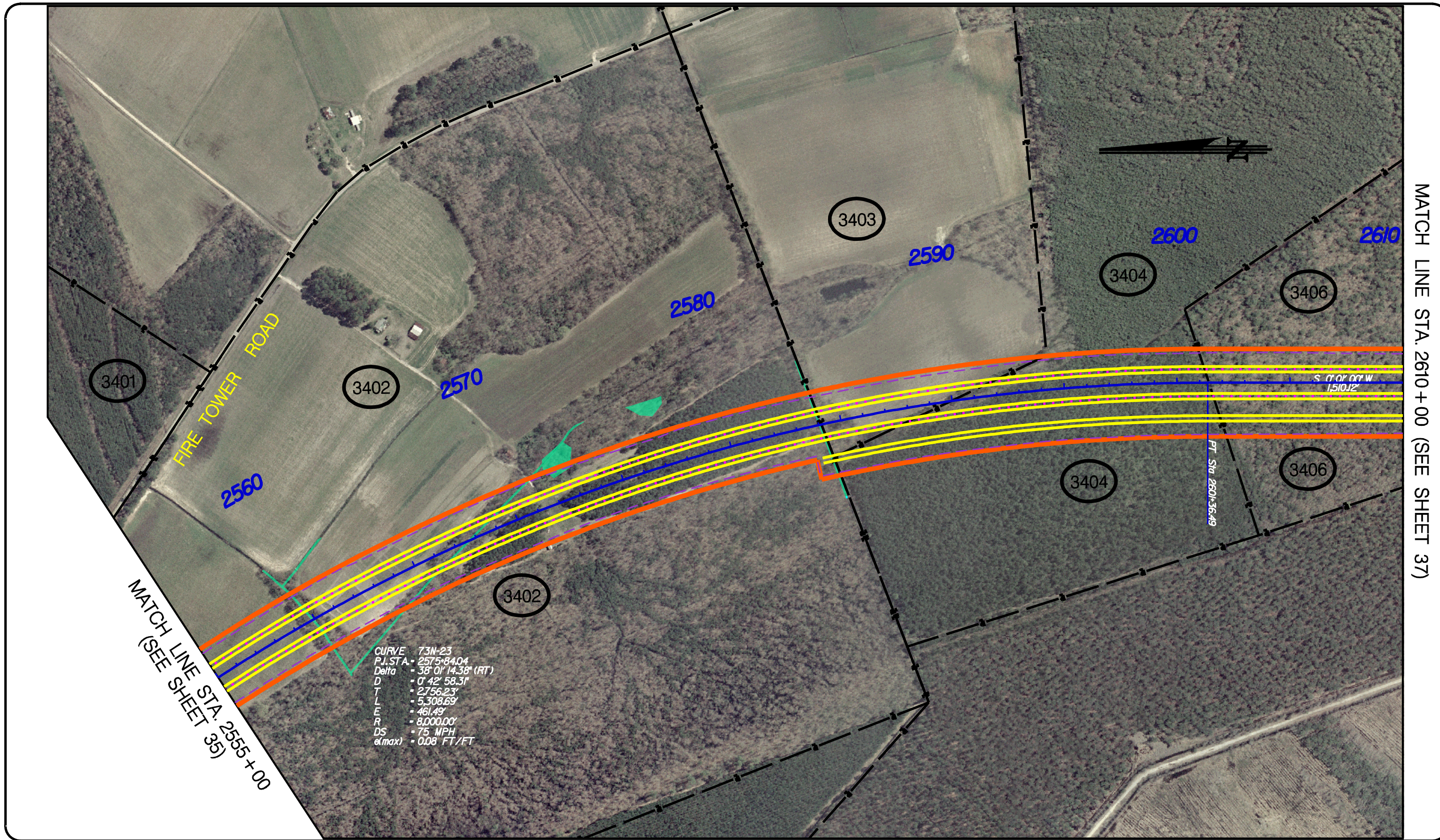
INTERSTATE 73
 MARLBORO & DILLON COUNTIES
 SOUTH CAROLINA
 RICHMOND & SCOTLAND COUNTIES
 NORTH CAROLINA

CONCEPTUAL ROADWAY PLANS
 I-73 NORTH (I-74 TO I-95)



PREFERRED ALTERNATIVE
 STA. 2500+00 TO STA. 2555+00


SHEET
 35



MATCH LINE STA. 2610 + 00 (SEE SHEET 37)

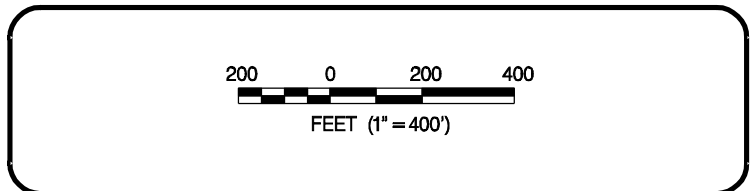
MATCH LINE STA. 2555 + 00
(SEE SHEET 35)

PHOTOGRAPHY DATE: 2003



INTERSTATE 73
MARLBORO & DILLON COUNTIES
SOUTH CAROLINA
RICHMOND & SCOTLAND COUNTIES
NORTH CAROLINA

CONCEPTUAL ROADWAY PLANS
I-73 NORTH (I-74 TO I-95)



PREFERRED ALTERNATIVE
STA. 2555 + 00 TO STA. 2610 + 00

SHEET
36