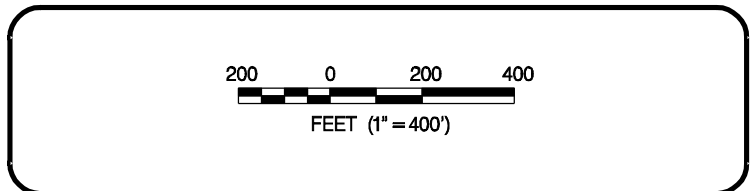


INTERSTATE 73
 MARLBORO & DILLON COUNTIES
 SOUTH CAROLINA
 RICHMOND & SCOTLAND COUNTIES
 NORTH CAROLINA

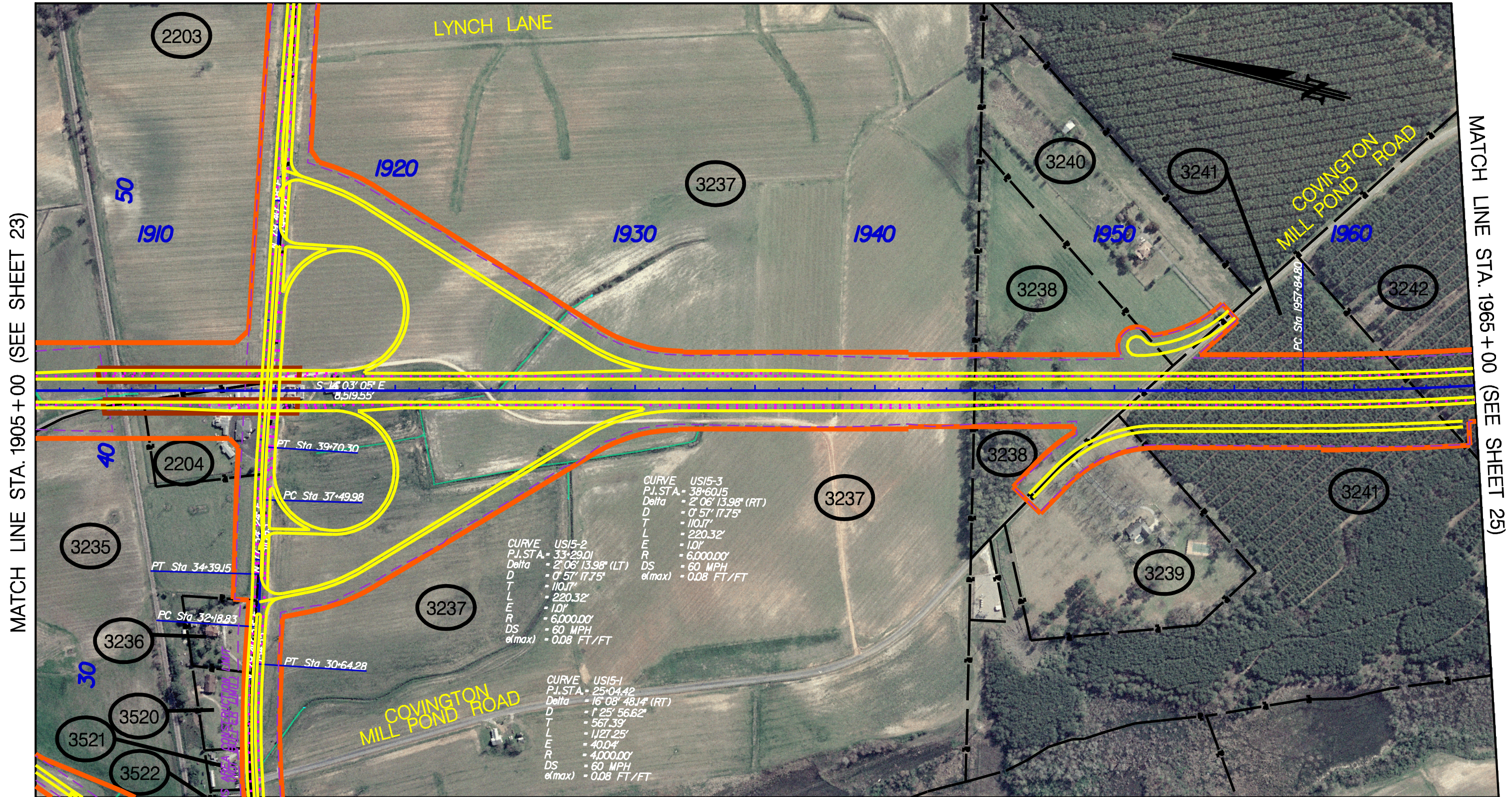
CONCEPTUAL ROADWAY PLANS
 I-73 NORTH (I-74 TO I-95)



PREFERRED ALTERNATIVE
 STA. 1845+00 TO STA. 1905+00

SHEET
 23

MATCH LINE (SEE SHEET 24A)



MATCH LINE STA. 1905+00 (SEE SHEET 23)

MATCH LINE STA. 1965+00 (SEE SHEET 25)

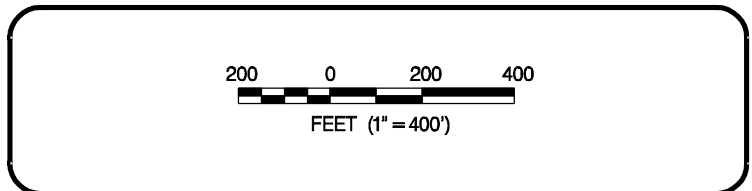
<p>CURVE US15-2 P.I. STA. = 33+29.01 Delta = 2°06'13.98" (LT) D = 0°57'17.75" T = 110.17' L = 220.32' E = 1.01' R = 6,000.00' DS = 60 MPH e(max) = 0.08 FT/FT</p>	<p>CURVE US15-3 P.I. STA. = 38+60.15 Delta = 2°06'13.98" (RT) D = 0°57'17.75" T = 110.17' L = 220.32' E = 1.01' R = 6,000.00' DS = 60 MPH e(max) = 0.08 FT/FT</p>
<p>CURVE US15-1 P.I. STA. = 25+04.42 Delta = 16°08'48.14" (RT) D = 1°25'56.62" T = 567.39' L = 1,127.25' E = 400.4' R = 4,000.00' DS = 60 MPH e(max) = 0.08 FT/FT</p>	

MATCH LINE (SEE SHEET 24B)

PHOTOGRAPHY DATE: 2003

INTERSTATE 73
 MARLBORO & DILLON COUNTIES
 SOUTH CAROLINA
 RICHMOND & SCOTLAND COUNTIES
 NORTH CAROLINA

CONCEPTUAL ROADWAY PLANS
 I-73 NORTH (I-74 TO I-95)



PREFERRED ALTERNATIVE
 STA. 1905+00 TO STA. 1965+00

SHEET
 24